

BMC Discovery for Multi-Cloud

Discover your assets and their relationships in minutes with up to 100% accuracy



PRODUCT DESCRIPTION

Discovery creates a dynamic, holistic view of data center and multi-cloud assets, highlights their relationships, and gives IT crucial visibility into how the infrastructure enables the digital business. Each scan delves into the information and dependencies for all software, hardware, network, storage, and cloud services—providing IT with the context needed to create an application map from any piece of information about it.

BUSINESS CHALLENGE

As data centers transform to multi-cloud environments, new ways to deliver digital services are being used to scale the business. **These private and public cloud environments often have limited or non-standard means of communications and need to co-exist with legacy infrastructure and software.** As a result, companies that don't have good visibility into how digital services are implemented struggle in their digital transformation.

BMC SOLUTION

Discovery automates asset discovery and dependency mapping to better gain visibility into management of digital services in multi-cloud and on-premises environments. It provides the trusted foundation for building application maps that enable digital transformation to be more aware, secure, and cost transparent.

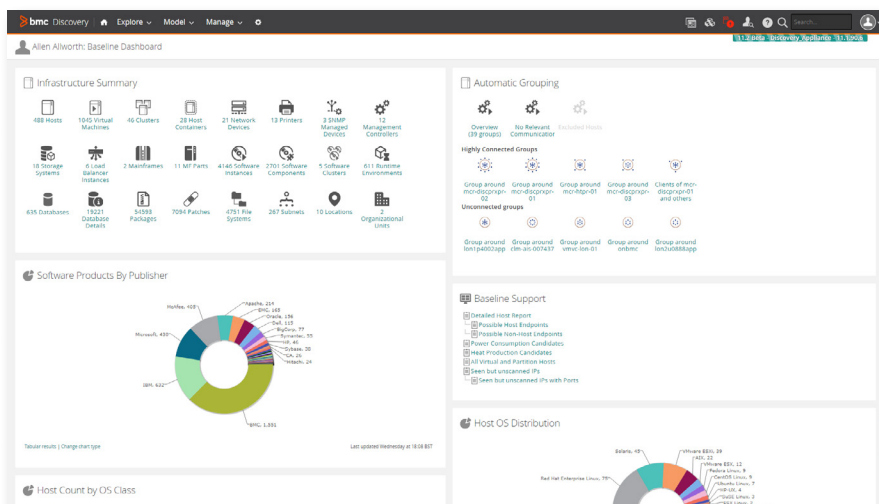
KEY FEATURES

Discovery automates asset discovery and dependency mapping.

- **Start-anywhere application mapping** – Starts mapping an application from any piece of information about it
- **4,000+ data center assets covered** – Ensures that every component in your IT infrastructure is discovered and its dependencies are identified
- **3 clicks to insight** – Provides a single point of entry into all components of the IT infrastructure with an index search engine
- **Open discovery** – No matter what solutions you use, there is a single trusted source of information leveraged by many different systems

KEY BENEFITS

- **Studies have shown a five-year average ROI of 470% for Discovery customers,** with a payback period of only 8 months.
- Discovery has the **broadest set of out-of-the-box patterns** that provide instant mapping of compute, storage, network, and software—now extended to the cloud.
- **SecOps teams can perform essential prevention and detection,** including locating servers that could be back door entry points, quickly identifying applications affected by a breach, and running a quick scan for OpenSSL.



← Baseline Dashboard

PRODUCT DETAILS

Agentless, Lightweight, and Scalable: Discovery is a ready-to-run virtual appliance. Deployment takes minutes, there is no installation process to run through, no external database to install and configure, and no specific configuration and operating system requirements to satisfy. This allows you to get up and running quickly with minimal effort to maintain it. While in operation, organizations can scan multiple times per day, depending on the need to maintain accuracy.

Security: Discovery is proven to be secure using standard security certifications, including **Common Criteria EAL2**. The virtual appliance has been hardened, complies with **NIST STIG**, and supports **FIPS 140-2** encryption standards. The application offers granularity in configuring access rights, encryption, and depth of discovery actions.

Configuration Management Database (CMDB) Integration: Discovery offers seamless integration into Atrium CMDB with out-of-the-box, continuous data synchronization. In addition, Discovery offers web services and database integrations that can be used to synchronize the data with other CMDB technologies.

Reference Library: Discovery provides dates for end of life, end of support, and end of extended support for common operating systems and software. This can help quickly identify unsupported software, better plan for upgrades, and avoid upgrading software that is no longer supported. The hardware reference library provides vendor specifications for hardware

power and thermal ratings. This information identifies inefficient hardware so that you can address the issue directly. In addition, Discovery enriches discovered software with Common Platform Enumeration (CPE) information provided by the National Vulnerability Database. This assists security operations in identifying dependencies associated to vulnerabilities.

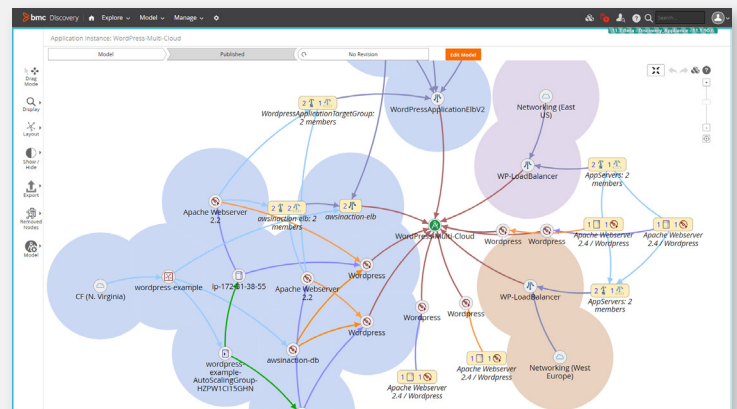
Discovery for Storage (optional add-on): This content pack enables storage components from twenty-five virtual and physical storage brands to be included in ITSM processes, enabling storage management teams to focus on more strategic work within their discipline.

Discovery for Multi-Cloud (optional add-on): Discovery can map assets and their dependencies in a single pane of glass to represent data center, public cloud, and private cloud environments. It performs this deep discovery in a cloud-friendly manner, leveraging API's and agentless protocols.

FOR MORE INFORMATION

To learn more about BMC Discovery, please visit bmc.com/discovery

Multi-Cloud Context



BMC is a global leader in innovative software solutions that enable businesses to transform into digital enterprises for the ultimate competitive advantage. Our Digital Enterprise Management solutions are designed to fast track digital business from mainframe to mobile to cloud and beyond.

BMC – Bring IT to Life

BMC digital IT transforms 82 percent of the Fortune 500.



BMC, BMC Software, the BMC logo, and the BMC Software logo, and all other BMC Software product and service names are owned by BMC Software, Inc. and are registered or pending registration in the US Patent and Trademark Office or in the trademark offices of other countries. All other trademarks belong to their respective companies. © Copyright 2017 BMC Software, Inc.



* 4 9 5 6 0 2 *