

# Control-M Managed File Transfer

Securely automate file transfers from a central interface to improve visibility and control

## PRODUCT DESCRIPTION

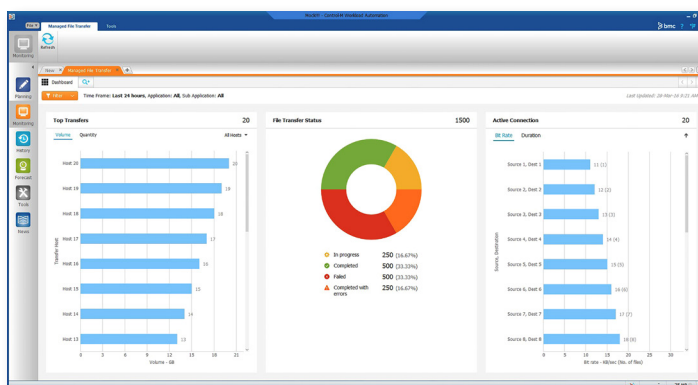
Control-M Managed File Transfer enables you to intuitively build, schedule, and manage file transfers, just like any other batch job. Combining batch jobs and file transfers in a single system prevents data errors and job failures while improving visibility and control.

## BUSINESS CHALLENGE

Modern enterprise operations are highly dependent on file transfers between different applications and systems. File transfers are typically managed through a combination of scripting, proprietary applications, and manual intervention. Each approach has its own risks and support requirements, and **using multiple methods prevents organizations from having fully integrated, automated operations.** These limitations prevent complete visibility into overall activity and are often the cause of failed file transfers.

## BMC SOLUTION

Control-M delivers the next wave of IT automation—**Digital Business Automation**—moving beyond traditional workload automation and adapting to modern IT technologies and processes. Control-M Managed File Transfer puts you in control of file transfers with an intuitive graphical user interface to guide you through job definitions and ensure transfers are associated with a comprehensive automated workflow or process when appropriate. With Control-M Managed File Transfer, you **get instant visibility into the status of file transfers with a dashboard view, enhanced security with encryption options, and reduced risk of downtime with automated monitoring and recovery features.**



## KEY FEATURES

**Control-M Managed File Transfer** securely automates enterprise file transfers, maintains data integrity, and provides a single view of all activity.

- **Centralizes and automates file transfers** and simplifies scheduling
- **Aligns file transfers with business processes**
- **Provides instant visibility into the status of file transfers** with an operational dashboard and file transfer search
- **Reduces TCO** with automatic deployment from a central interface and built-in file transfer server

## KEY BENEFITS

- **Ensures compliance** with successful file transfers that help ensure data integrity
- **Improves service levels** by eliminating lag time between file transfer and subsequent processing steps
- **Reduces risk** by automatically restarting unsuccessful jobs from the point of failure
- **Provides a single point of control** for the enterprise by managing file transfers inline with other related workloads

- ◀ **Control-M Managed File Transfer** provides instant visibility into various aspects of the file transfer environment, including activity on specific endpoints, throughput levels across active file transfer connections, and an overall status view of all file transfers.

## PRODUCT DETAILS

### Dashboard view of file transfer status and endpoint activity:

The intuitive operational dashboard provides instant visibility into all file transfer operations, including the status of all file transfers, throughput levels, and specific endpoints.

**Advanced search capabilities:** From the product client application or from a self-service, web-based interface, users can easily find details of a specific file, without needing to know the associated name of the job that transferred the file.

**Convenient, comprehensive monitoring:** Schedule secured file transfers with encryption and authentication, monitor run-time statistics (e.g., transfer rate and estimated remaining time), and quickly recover when file transfers fail.

**File transfer and business processes alignment:** After a file transfer operation completes, the dynamic scheduling capability automatically updates the business service and initiates any downstream jobs, eliminating the need for manual intervention or complicated scripting. Automated integration ensures that any related processes are triggered on schedule and that service levels are met.

**File transfer protection:** Files can be transferred securely with FTP, secured FTP (SFTP), FTP over SSL, or PGP encryption.

**Automatic recovery:** When network failures or outages cause a file transfer to fail, automatically recover and restart the failed transfer from the point of failure or from the beginning. If multiple files are transferred within a single job and one file transfer fails, recover or restart only the file or files that failed. Automated monitoring and scheduling features ensure that dependent jobs can automatically adjust to the change in the scheduled processing time.

**Centralized configuration:** Administrators can deploy and upgrade Control-M Managed File Transfer on every endpoint from a centralized configuration interface. They can also use the interface to manage the connection profiles to the endpoints and configure various optional settings.

**Built-in file transfer server:** Eliminate the need to manually configure file transfer settings on each endpoint or to use third-party file transfer servers for Microsoft® Windows® platforms. The file transfer server supports secured transfer and authentication and can be managed from the central configuration interface for all endpoints.

---

### FOR MORE INFORMATION

To learn more about how Control-M Managed File Transfer can help you improve visibility and control, please visit [bmc.com/mft](http://bmc.com/mft)

BMC is a global leader in innovative software solutions that enable businesses to transform into digital enterprises for the ultimate competitive advantage. Our Digital Enterprise Management solutions are designed to fast track digital business from mainframe to mobile to cloud and beyond.

**BMC – Bring IT to Life**

**BMC digital IT transforms 82 percent of the Fortune 500.**



BMC, BMC Software, the BMC logo, and the BMC Software logo, and all other BMC Software product and service names are owned by BMC Software, Inc. and are registered or pending registration in the US Patent and Trademark Office or in the trademark offices of other countries. All other trademarks belong to their respective companies. © Copyright 2017 BMC Software, Inc.

